



## Abqaiq Revisited - Some Geological Analysis of Potential Saudi Depletion

Posted by [JoulesBurn](#) on October 18, 2009 - 12:22pm

Topic: [Supply/Production](#)

Tags: [abqaiq](#), [peak oil](#), [satellite](#), [saudi arabia](#) [[list all tags](#)]

*This is a repeat of JoulesBurn's [post on Abiqaiq](#) from May 2008, which may be of interest to those reading Heading Out's post. -- Gail*

Abqaiq, an aging super giant Saudi Arabian oil field, has yielded over 11 billion barrels of oil since it was discovered in November of 1940. Its past provides us with the poster child for easy oil. The first well flowed at 9720 barrels per day, a far cry from today's land finds where multiple horizontal laterals are necessary to coax lesser quantities from stingier reservoirs. But Abqaiq's more recent past paints a more muddled picture, as efforts to extract the remaining oil have produced mixed results. More advanced recovery methods have been successfully employed in some parts of the field, but these have likewise revealed unexpected geological complexities which have in turn hindered recovery in other areas. Many of the new challenges encountered in Abqaiq are relevant to the future prospects for other fields, particularly Ghawar and Khurais. This article will evaluate the development status of the field using satellite imagery to identify recent drilling in correlation with several recent technical reports on new developments and strategies for maintaining production.

---

*This is a repeat of JoulesBurn's [post on Abqaiq](#) from May 2008, which may be of interest to those reading Heading Out's post. -- Gail*

Abqaiq, an aging super giant Saudi Arabian oil field, has yielded over 11 billion barrels of oil since it was discovered in November of 1940. Its past provides us with the poster child for easy oil. The first well flowed at 9720 barrels per day, a far cry from today's land finds where multiple horizontal laterals are necessary to coax lesser quantities from stingier reservoirs. But Abqaiq's more recent past paints a more muddled picture, as efforts to extract the remaining oil have produced mixed results. More advanced recovery methods have been successfully employed in some parts of the field, but these have likewise revealed unexpected geological complexities which have in turn hindered recovery in other areas. Many of the new challenges encountered in Abqaiq are relevant to the future prospects for other fields, particularly Ghawar and Khurais. This article will evaluate the development status of the field using satellite imagery to identify recent drilling in correlation with several recent technical reports on new developments and strategies for maintaining production.

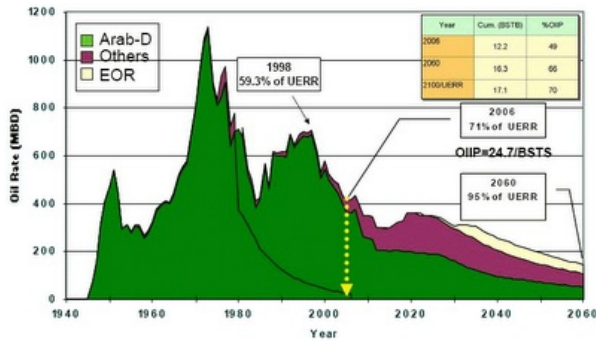
*"Wolde you bothe eate your cake, and have your cake?"*

John Heywood, 1536



Abqaiq is situated to the northeast of the Ghawar oil field and to the southwest of Dhahran and

the headquarters of Saudi Aramco. It has been producing oil for over 60 years, and although there is still more oil to be had, it has recently become more proclaimed as a supposed harbinger of continued success by Saudi Aramco. The past and predicted future production from Abqaiq was revealed in a Nansen Saleri (formerly of Saudi Aramco) [presentation](#) at CERA Week in February 2007 shown below (click for larger version):

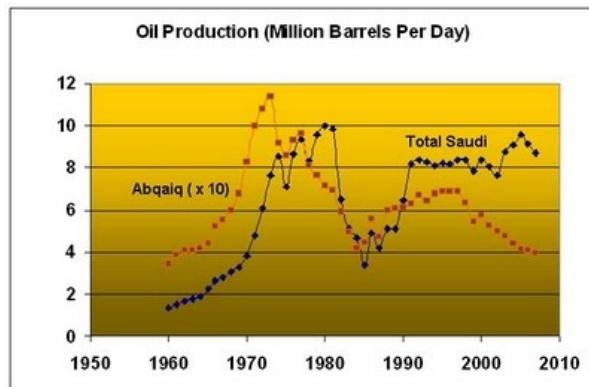


There are several features indicated in the above graphic, but of particular note are the Oil Initially In Place (OIIIP) for the field (24.7 billion barrels), the marked decline in production since the mid-1990s, and the expected contribution from "Other" reservoirs for future production. The vast majority of Abqaiq oil has been produced from the Arab-D reservoir, an NE-trending anticline with an uplift on the southern end. Lesser amounts have been produced from the lower-lying Hanifa reservoir, separated from the Arab-D by over 300 feet of the Jubaila formation. As indicated, an increasing fraction of the total production is predicted to come from the Hanifa, starting from about 2006. But this is not a new aspiration: intensive efforts to tap the Hanifa began in the early 1990s and these have had, as is apparent from the data, minimal success. The idea was to perform an intensive waterflood of the lower reservoir, with a combination of horizontal injectors and producers (*Oil & Gas Journal*; Jun 21, 1993), but things clearly have not worked out as expected.

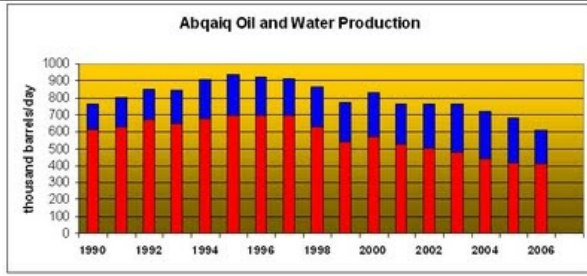
Typical of the spin on Abqaiq is this take by Saleri as reported in the [WSJ Environmental Capital Blog](#):

“Abqaiq became a renaissance story for Aramco,” he says, insisting that the field’s pressure remains strong and its water content is going down even after more than 60 years in production. Abqaiq “is doing fantastically,”

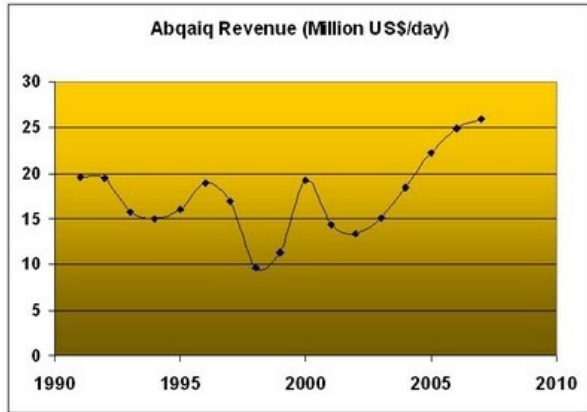
Of course, part of the disconnect here is that "doing fantastically" means different things to different people. For a reservoir engineer (such as Saleri), this might mean keeping the water cut low and getting the highest possible recovery from the field. However, for a consumer of Saudi oil, the trend of decreasing production in this decade is not a promising development. As for a "renaissance", I suppose one could point to the surge in production in the late 1980s. But if we put this in context of overall Saudi production (below figure), it seems more likely that this increase resulted from a renewed desire to produce fully rather than a renewal of the field itself.



Much has been made of the decreased water cut (from 42% in 2004 to 32% in 2006, see [SPE 110979: Technological Applications Redefining Mature Field Economic Limits](#)). While this does improve the economics of keeping things going without needing new equipment for separating oil from water, it does not necessarily lead to more oil. Note the trend in the figure below (red=oil, blue=water).



The final arbiter, however, might be the person counting the money. If we consider the revenue from the oil extracted from Abqaiq, in constant 2007 dollars, the picture improves tremendously:



Satellite images of Abqaiq presented herein, as well as recent technical reports and comments by Saleri and others, suggest that Saudi Aramco is still serious about keeping the oil flowing. About half of the Abqaiq OOIP has been produced to date. Their goal of another 20% will not come as easily as the previous 20%, and is certainly not a foregone conclusion that it will happen -- or happen at the rate that they expect. Using a satellite analysis as a backdrop, let's see how some of their recent efforts are doing.



**Google Earth View of Abqaiq**

As of this writing, Google Earth displays high resolution imagery covering the entire Abqaiq field dating to September 6, 2006. There are also low-resolution previews available, covering 2/3 of the field, which date to November 11, 2007. These will be used to identify additional work in the field subsequent to the 2006 date.

**Taking Measurements**

In the image at right, the outer and inner polygon overlays denote the original oil/water contacts (OOWC) for the Arab-D and Hanifa Reservoirs, respectively. These were determined using publications described herein in conjunction with actual well locations. Shown below are reservoir size estimations based on the measured areas and literature petrophysical parameters for Abqaiq.

Abqaiq Field Physical Parameters

Reservoir	Area (sq. mi.)	Thickness (ft)	Porosity* (%)	Perm* (mD)	OIIP** (10 <sup>9</sup> barrels)
Arab-D	180	--	--	400	--
Zone 1	""	25	14.8	242	1.9
Zone 2	""	135	22.5	470	15.9
Zone 3	""	100	9.6	107	5.0
Hanifa	26	300	30	1-2	6.7

Total 29.5

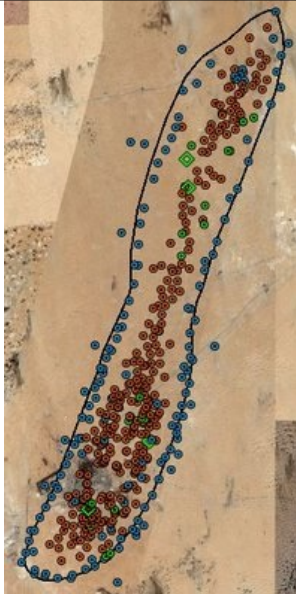
\* Mean values  
 source : Journal of Petroleum Geology,  
 vol.24(1), Jan. 2001, pp 101-114  
 \*\* Stock Tank Oil Initially In Place, assuming:  
 initial water saturation = 11%  
 volume factor = 1.53

The total OIIP calculated for Abqaiq (29.5 billion barrels) is somewhat high compared to the figure stated by Saudi Aramco (24.7), although there are many uncertainties in some of the assumptions. For one, no allowance was made in the above calculations for edge effects. This will tend to overestimate oil volumes for both reservoirs. Also, initial water saturation values might be different than those assumed; larger values will translate into less OIIP. The calculated distribution of oil between the various reservoirs and zones, however, is probably more accurate than the absolute numbers. Although the area covered by the Hanifa reservoir is considerably smaller than that by the Arab-D, the higher porosity and larger thickness of the Hanifa means that it has roughly 1/4 of the oil of the larger reservoir (if similar values for water saturations are assumed). Of course, in light of the tightness of the rock (1-2 mD), getting the oil out is the challenge (although the permeability in Hanifa is more determined by fractures). Furthermore, this challenge is more daunting because the reservoirs, despite being separated by hundreds of feet of impermeable rock, are not isolated from one another but rather connected through extended fractures. Indeed, they are the same oil. The problems that arise from this connection will be addressed shortly.

**But First, Tee Time**

Before checking out the wells, I will first identify the dark area located in the southwest part of the field in the image above. One surface feature of Abqaiq which is not found in Ghawar (or other more remote oil fields) is a residential area complete with a golf course (alas, not with grass). This is the Abqaiq compound, one of several housing facilities provided by Saudi Aramco for its employees. While this close location does have its benefits, there are also safety issues which do present constraints on oil field development.





**Abqaiq Wells in 2006**

Shown in the figure at right is the Abqaiq field as seen in the Sept. 2006 satellite image with all oil wells and well sites identified. Red and green placemarks indicate old and new wells respectively, blue indicates water injection wells, and green diamonds indicates drilling rigs. For part of the field, a resource is available for correlation of well locations. A paper by Paul Lawrence entitled *Seismic attributes in the characterization of small-scale reservoir faults in Abqaiq Field* ([The Leading Edge; April 1998; v. 17; no. 4; p. 521-525](#)) includes a map with locations of wells in the South Dome area. This well inventory, probably dating to 1996-1997, will be used later to identify drilling activity subsequent to that time. The published well spacing was found to be quite accurate.

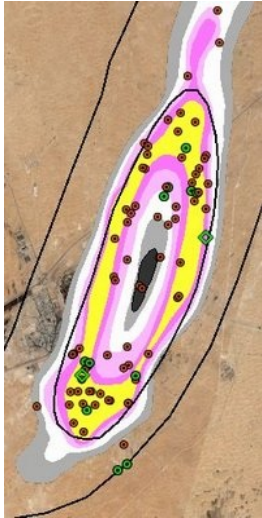
A disparity in the number of wells between the northern and southern halves of the field (the "North Nose" and "South Dome", respectively) is clear. Some of this is due to the wells drilled into the Hanifa reservoir which is present only in the south. Also, the bottleneck in the middle of the field has probably constrained well placement there, given the desire to offset the producers from the peripheral injectors. But there is definitely drilling and/or re-drilling occurring in the north, though the depleted state of the field has revealed some geologic differences between the north and the south, and these have led to the need for different approaches to maintain production levels.



**Abqaiq in 1993**

Now, let's step backwards and consider the state of the Abqaiq field in the early 1990s. The *Oil & Gas Journal* paper cited above provides data on the remaining oil thickness in the field as of 1993, and this data has been recreated and superimposed on the satellite imagery as shown at left. The color scheme indicates increasing oil layer thickness going from black to yellow. Note that,

towards the middle of the South Dome, the oil thickness goes through a maximum and then reverses. This is due to the presence of a gas cap which resulted from the injection of gas into the crest of the Arab-D reservoir, for pressure maintenance purposes, from 1954 to 1978. The remaining oil is squeezed between the advancing waterflood and the gas cap, as is also occurring in the [Ain Dar area of Ghawar](#). There is no similar gas cap in the North Nose.



**Drilling 1996-2006: South Dome**

Using the ca. 1996 well inventory from the Lawrence paper, wells drilled subsequently can be identified. Shown at left is a closeup view of the oil thickness map for the South Dome with the locations of the more recent oil wells indicated. Indeed, most of the subsequent wells have been drilled in the thickest oil layer, including some being developed in 2006. Relatively fewer have been drilled towards the center of the gas cap. Of course, this area is coincidental with the location (hundreds of feet lower, of course) of the Hanifa reservoir as shown by the inner black oval. Distinguishing between oil wells drilled into the two reservoirs based on the satellite imagery is rather problematic, but those drilled well within the gas cap area are most likely targeting the Hanifa.

Two drilling rigs are visible. The one in the lower left is drilling a new well (or, at least newer than 1996), whilst the other is a rework of a pre-2006 well. Eleven new well sites are identified in this part of Abqaiq. Most of these will probably produce oil, but this can usually only be discerned after pipelines are connected. The two located near the bottom of the image, however, are certainly water injectors.



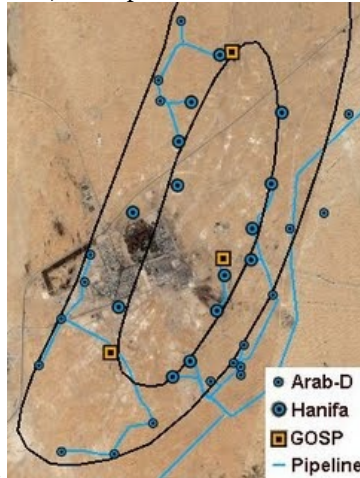
**South Dome Drilling in 2007**

Using three low-resolution DigitalGlobe (preview) images dating to February 23rd and November (2nd and 20th) in 2007, additional well sites developed subsequent to 2006 are identified as distinct changes (localized color changes) from the high-resolution 2006 image. Tentative sites with no surface infrastructure in 2006 are identified as new wells, while activity at well sites

existing in 2006 are identified as reworks. These are indicated in the figure at left as green and red placemarks respectively. Also shown again are the 1993 oil thickness contours and the perimeter of the lower-lying Hanifa reservoir (black oval). It is possible that some rework wells are actually new wells next to existing wells. As was the case in 2006, most wells are being drilled into either the thicker remaining oil layers in the Arab-D reservoir or into the Hanifa. Note that, because of the predominance of horizontal drilling, the actual oil target might be somewhat removed from the wellhead geographic location.

**Flooding the Basement: Hanifa Water Injectors**

As discussed in the O&GJ article cited above, a serious effort to produce oil from the Hanifa reservoir commenced in the early 1990s. The plan was to employ horizontal water injection wells placed peripherally around the Hanifa reservoir to enhance production from a combination of new horizontal and existing vertical wells drilled updip. A figure indicating the planned positions of wells was included in the article, but a position match of these with wells identified using Google



Earth could not be made. Instead, it was found that Hanifa injectors could be identified directly, as shown in the figure at right, by tracing pipelines from other injectors and also by visual identification. A total of 14 wells feeding water into the Hanifa have been identified (most of which were not present in the 1996 Lawrence well inventory cited above). Water use for injection comes from three different sources. Seven injectors on the eastern side of the field draw water from the main trunklines which trasport seawater to Shedgum/Ghawar. On the northwest side, three wells inject produced water coming from a gas-oil separation plant. Finally, four wells are found to be stand-alone injectors, as described below.

**Water Hazard**

One interesting part of the injection system for Hanifa is the use of stand-alone water injector wells. The oil water contact (OWC) for the southwest part of the Hanifa field underlies a populated area, and there is some danger associated with having high pressure water pipelines crossing these areas. In addition, gravity-fed injection (used for the Arab-D injectors near the Aramco compound) was deemed unsuitable for Hanifa due to the poor flow characteristics.

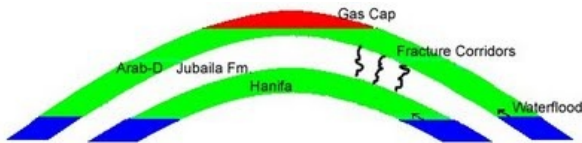


Instead, dual-function wells were employed which both withdraw water from an aquifer and then inject it into the target reservoir assisted by an electric pump (see [PROC SPE ANNU TECH CONF EXHIB. Vol. PI, pp. 619-623, 2000](#)). One of these wells is shown at right. It does seem odd that pressurized water would be considered more of a public health hazard than pressurized oil with hydrogen sulfide dissolved in it, but the GOSPs in Abqaiq take in oil at about 400 psi whereas the water is probably being injected at over 2000 psi.

**The Coupled Reservoir Problem**

Having more than one reservoir from which extract oil without having to leave the field you are in would seem to be a good thing. However, complications arise when the reservoirs are somehow linked. For Abqaiq, this linkage exists in the form of small fracture channels across several

hundred feet of the Jubaila formation. This has been suspected for quite some time, as the pressure in the little-produced Hanifa seemed to track that in the Arab-D. It is theorized that a late-Cretaceous upwelling, possibly due to salt diapirism, resulted in fracturing of the older Jurassic layers (Hanifa/Jubaila/Arab). This might have occurred after oil had collected in the Hanifa such that the fractures then permitted oil to migrate into the Arab-D, although the exact sequence of geologic events is not easy to ascertain. In any event, the situation that developed is one in which a common (with respect to the vertical) Oil Water Contact existed in the two reservoirs prior to production. This is shown in the diagram below.



This represents the equilibrium case. As water is injected peripherally into one of the reservoirs, the restricted flow through the fractures will push the OWC of that reservoir past that of the second. This can lead to water inclusion in pockets in the second reservoir, potentially stranding oil. As oil is produced from Arab-D wells, reduced pressure near the wellbore can cause upward migration of Hanifa oil if fractures are in close proximity. The desire to avoid this scenario has likely constrained production from the Arab-D in recent years, especially so because of the presence of the central gas. These challenges have been described in the following 2007 SPE paper: *Development of a Dual Media Full-Field Simulation Model to Optimize Injection/Production Strategy for Two Communicating Mature Carbonate Reservoirs*. ([SPE 105277](#))

### Status of Hanifa Waterflood

One indication that the Hanifa waterflood has not been successful is the lack of significant production as reported by Saudi Aramco. Also, the 2006 SPE paper *Smart Well Completion Uses Natural Reservoir Energy to Produce High-Water-Cut and Low Productivity Index Well In Abqaiq Field* ([SPE 104227](#)) details many of the difficulties, including inadequate pressure support by the peripheral injectors, due to the limited rock permeability, and low productivity and early watering for most wells. SPE 104227 also describes a single, well drilled at the field crest through the Arab-D gas cap into the Hanifa reservoir in 1998. This well could only be produced intermittently as the pressure would decrease below the bubble point. Its output declined 50% from its starting rate by 1999, started producing water and declined further, and was subjected to acid treatment in 2003. This bumped up production, but began decreasing degenerating rapidly again. In Dec. 1994, the well was worked over to employ gas lift technology to raise the oil out of the Hanifa, making use of the Arab-D gas cap. This has enabled stable production at about 2000 barrels/day with an equal amount of produced water. This is presented as a success story, although the long-term viability is uncertain and there are finite limits on how much gas pressure is available for this.

SPE 105277 also relates problems with uneven waterflooding of the Hanifa, with fractures allowing water to flow preferentially through numerous corridors towards the center. Coupled with the finding that fractures also account for 95% of the productivity from the Hanifa, placing horizontal wells as to avoid them has drawbacks. The solution has been to try to model behavior of the dual-reservoir system and adjust water injection rates accordingly while still trying to keep the Hanifa flood front even with that of the Arab-D. Many more producers were planned as of the writing of the paper.

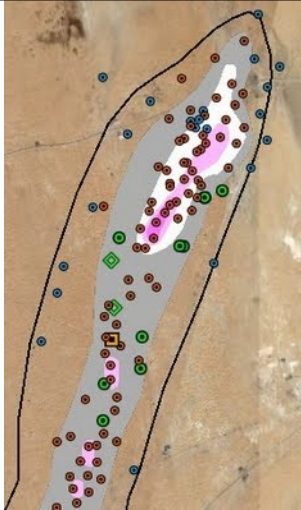
### Implications for Ghawar and Khurais

The dual-reservoir problem discussed above is directly relevant to the development of and production from the Khurais oil field in that the same geological assemblage [exists there](#). One big difference between Khurais and Abqaiq in this respect, though, is that the overlying Arab-D in the former is of much lesser quality. How this would change the dynamics between the two reservoirs is not known.

In the Ghawar oil field, the Hanifa formation enjoys notoriety, not as a potential stash of oil, but rather as the source of water for what is called the Shedgum Leak Area, groups of wells well above the injection line which started producing water early in their life. Water flows up fractures across the Jubaila. The extent that this has impacted production in Shedgum is unclear, or whether pressure communication with the Hanifa will cause further difficulties as the Arab-D depletes further.

### Recent Development in the North Nose





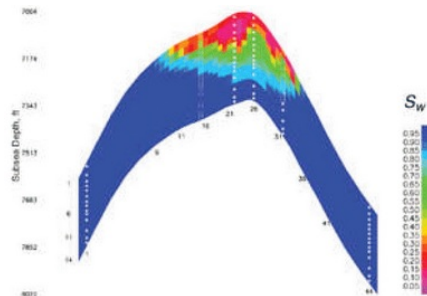
Shown at right is the northern portion of Abqaiq with the 1993 oil thickness contours superimposed on the 2006 satellite view and oil well inventory. Red placemarks correspond to operating wells, green placemarks to new well sites, and diamonds to drilling rigs (both of which are drilling new wells). The amount of recent activity is surprising given the depletion level of this part of the field in 1993. It is also interesting that most of the new wells are placed where oil thickness is (was) smaller as opposed to the crest.

There are several publications describing the drilling projects which have been undertaken to maintain production from this area:

[SPE 110979: Technological Applications Redefining Mature Field Economic Limits](#)

[SPE 68128: Use of Short Radius Horizontal Re Completions to Recover Un-Swept Oil in a Maturing Giant Field](#)

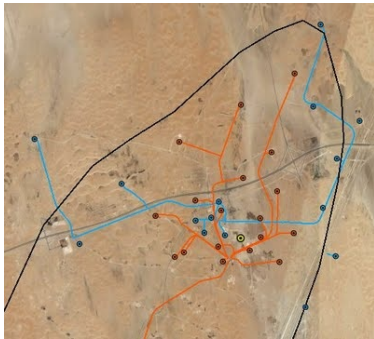
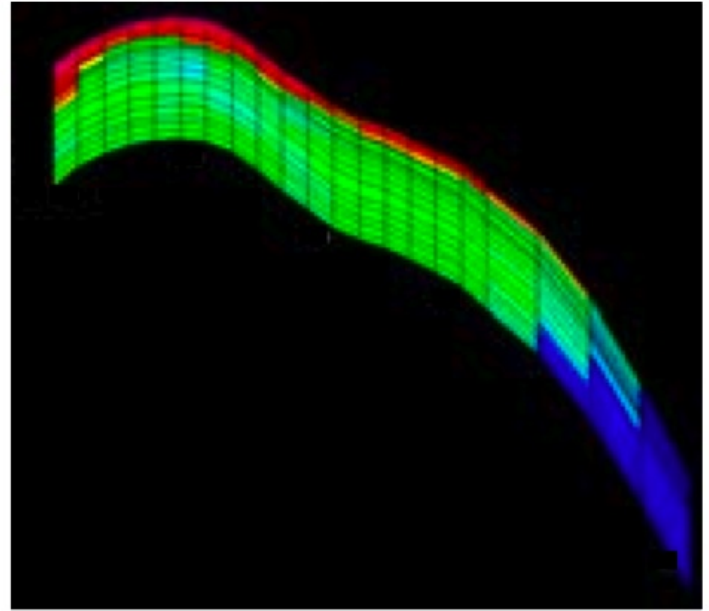
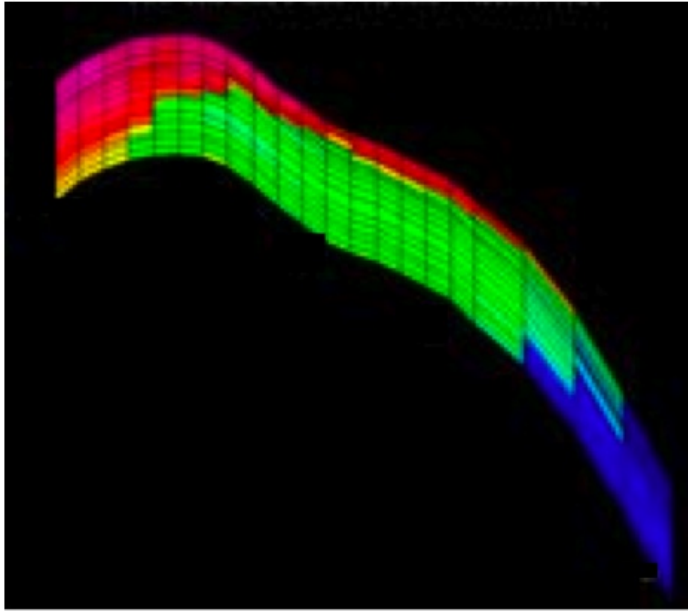
[Multiphase Pump Recovers More Oil in a Mature Carbonate Reservoir](#)



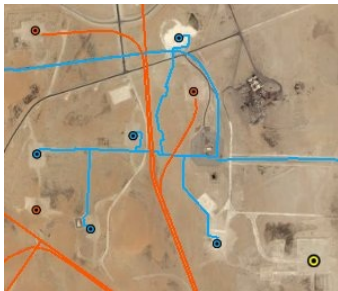
One graphic found in the latter reference, shown at right, is probably familiar to many readers as it has been used to provide a dramatic visual example of reservoir depletion. This figure shows depth-distributed water saturation values in an east-to-west vertical slice (click to enlarge). The figure has often been misinterpreted in that the red areas at top do not correspond to a gas cap (as the north of the field does not have one) but rather to rock which still has minimal water saturation. It is not known exactly where in the north this cross section relates to, although a good guess would be somewhere in the vicinity of the manifold wells discussed in the text. Note the very large saturation values for the depleted portions of the reservoir (~90%). This translates into much less oil left behind as compared to Ghawar (10% in Abqaiq vs. 25-35% in Ghawar). While this is good news for Abqaiq, and also explains the high expected recovery rate, the implication for Ghawar is that it is not reasonable to conclude that its recovery rate will be similar. Show below is a similar (simulation) slice in northern 'Ain Dar (Ghawar) as discussed [here](#).

1990

2004



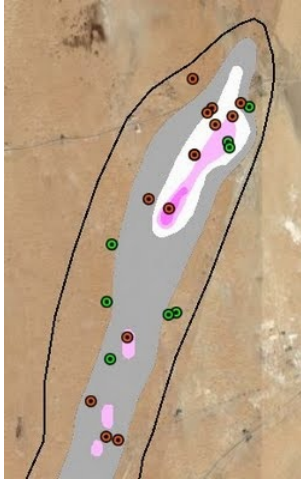
The main focus of the Multiphase Pump paper is on a successful attempt to rehabilitate a group of wells in the North Nose in which the pressure of produced oil was too low to make it through a connecting manifold and down the pipeline to the nearest GOSP. These wells are identified in the figure at left as red placemarks with the oil pipelines indicated with red traces. As of 2006, all but one of these wells are still connected by pipeline to the manifold. A number of other wells, shown with blue placemarks, are instead connected to each other and to pipelines for water injection (blue traces).



The cluster of injectors somewhat centrally located amongst the manifold wells seems a marked departure from the use of peripheral injectors, perhaps indicating that the latter approach is no longer sufficient for maintaining pressure at the wellbores. Also visible in the image at right is the only non-associate gas well in Abqaiq, indicated with the yellow placemark in the lower right corner. This well, drilled in 2003, doesn't appear to be connected to anything, but the well ID (ABQQ-480) is of note because it suggests that it was the 480th well placed in Abqaiq when it was spudded.

In general, the picture that emerges is one where the remaining oil in the Arab-D reservoir lies predominantly in the top 40 or so feet of the reservoir. This has led to the recompletion of many existing vertical wells by shutting off the lower wellbores and adding short horizontal sidetracks to extract oil from the thin layer at top. This has been used in the South Dome area as well, but

### North Nose in 2007



Again using low-resolution 2007 DigitalGlobe images, locations of new and reworked wells were identified as shown at right. This picture also seems to suggest that a combination of new and recompleted wells in the (presumed) oil-bearing areas along with new water injectors are still being deployed in north Abqaiq. Green and red placemarks denote activity at new and previously existing sites respectively.

### Conclusion

Analysis of satellite imagery and correlations with technical publications has helped to build a more complete picture of the reservoirs of Abqaiq and of recent efforts to get more oil out. A similarity with the Khurais field, specifically the presence of two connected reservoirs of dissimilar quality (Arab-D and Hanifa), portends potential difficulties as Khurais depletes. In contrast, the rather anomalously high final water saturation for Abqaiq vs. Ghawar suggests that expecting similar recovery rates with the latter is perhaps expecting too much.

*Previous entries in The Oil Drum, Satellite Edition:*

- [Satellite o'er the Desert](#)
- [Intro to Satellite Sleuthing 101: Finding Haradh III](#)
- [Khurais Me A River](#)
- [Happenings in Harmaliyah](#)
- [Ghawar Numerology: Drilling in Uthmaniyah](#)

Previous TOD entries on Abqaiq:

- [An Oilfield in Arabia](#)
- [A Picture Of Depletion](#)



This work is licensed under a [Creative Commons Attribution-Share Alike 3.0 United States License](#).